



St. Antony's Catholic College

Aspire - Believe - Achieve

Year 9 Resistant Materials

Instructions for the week beginning Monday 4th May 2020

Do

We are all currently in very strange times, and are having to self-isolate in our homes. I don't think that any of us had much time to prepare for the COVID-19 situation, and were unable to predict what was coming.

In light of this, and your experience of self-isolation for the past few weeks, I would like you to design your own ideal self-isolation pod. Think about what equipment you would need for everyday tasks such as cooking, cleaning and sleeping etc. Then think about what would be good for entertainment. You could include things like a craft section, gaming section or workout section to name a few. I have included some examples below. I would like them to be carefully **sketched, labelled and shaded**. Be creative! I would also like you to think about the environmental impact, what could you include in your design that will have less impact on the environment, such as materials or renewable energies?

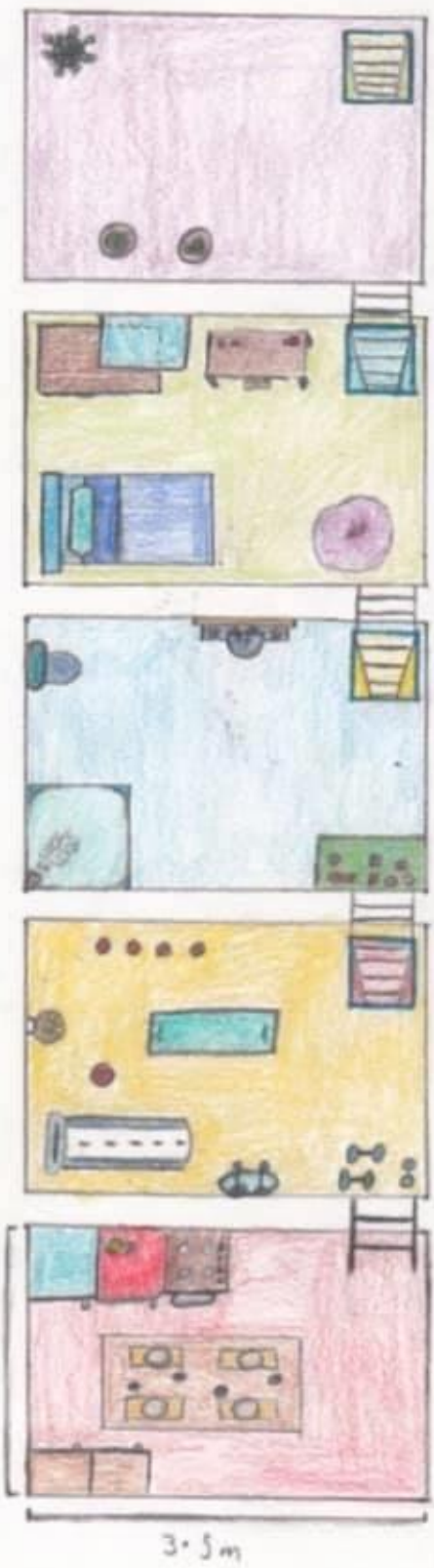
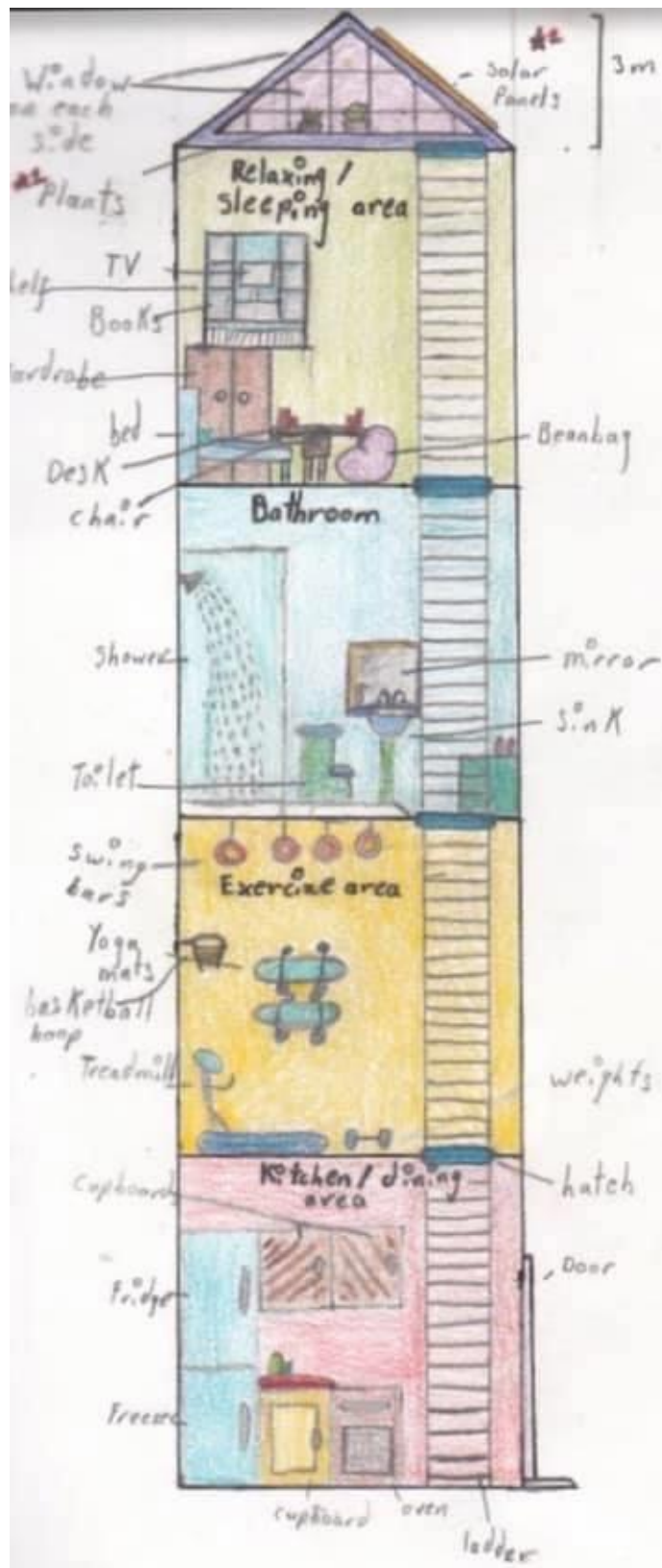
Challenge (Z3&4)

Draw yours in a 3D view. Annotate it in detail, explaining your choice of activities and furniture, along with the layout that you have chosen.

Submission

Please email your work to me at L.adderley@st-antonys.com I would love to see your ideas!

Fantastic Friday – Please email Mrs Wright (f.wright@st-antonys.com) by 12pm on a Friday if you'd like to share some of your best work of the week with her. She'd love to see it!



* plants can improve stress, anxiety and depression
 * solar panels can provide sustainable energy

